

GLASS RAILING ON PROFILE GARDA 2 AY

REMOTE SLAB NOSING MOUNTING
WITH TECHNICAL ADVICE

GARDA 2 AY REMOTE MOUNTED is part of our new range of glass railings on profile.

This solution is validated by the TECHNICAL ADVICE n° 2.1-15-1674V4 from the CSTB.

Righetti offers you a complete glass railing system including laminated glass and its fixing system on profile TRANSLEVEL® by ONLEVEL.

GARDA 2 AY is a glass railing system suitable for a slab nosing installation (English installation). Laminated glasses are fixed with an aluminium profile in a continuous manner without a post, with or without a handrail.

NEW

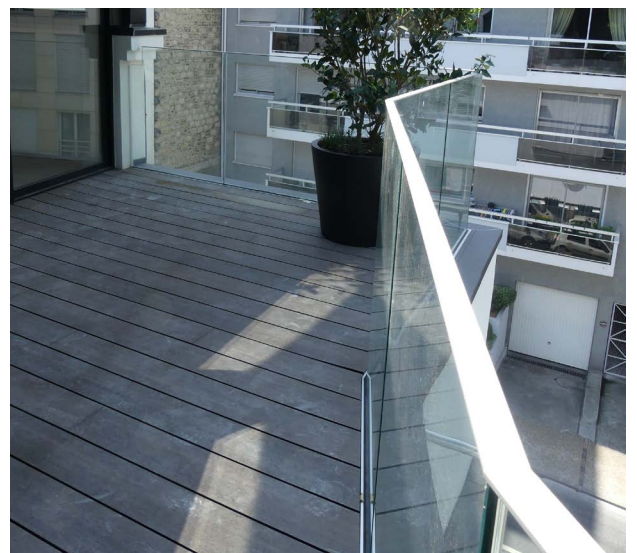
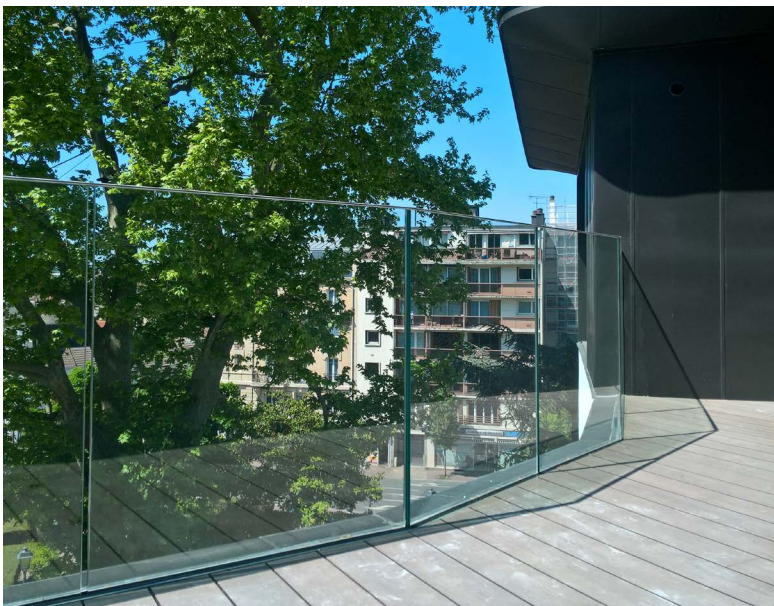
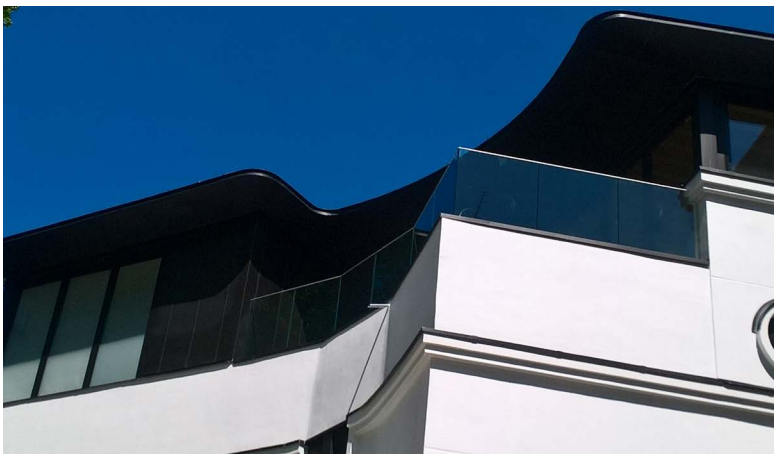


Glass railing on profile GARDA 2 AY

This glass railing solution can be used both inside and outside, it offers a perfect finish thanks to its cover cap.

GARDA 2 AY is an intelligent solution for a quick and easy mounting.

Drilling and fixing on the slab field. It resists linear loads of 1 kN and is suitable for **tempered laminated glass 10/10/4** for construction sites with TECHNICAL ADVICE !



TECHNICAL INFORMATION

- Floor mounting exclusively
- Standard length: 2500 mm x 50 mm x 208 mm
- Profile height (overall, seamless): 208 mm
- Finishes: Anodized, untreated, brushed stainless steel aspect, lacquered
- Profile with drainage hole per meter
- Tempered laminated glass 10/10/4
- Number of shims: 3/ml
- Water flow opening
- Top cover
- Possibility to add a handrail
- Pre-drilled profile every 370mm

MECHANICAL FIXING FOR STRUCTURAL WORKS

Slab-mounted profiles are fixed to the main structure by Fischer R6 M10x90 type dowels with 7 dowels / 2.5 m. The use of dowels from other suppliers is permitted, if the dowels resistance is comparable.

FEATURES

Features	Values (mm)
Maximum glazing width	2500
Minimum glazing width	1000
Maximum system's height from the finished floor	1100
Minimum glazing height	1098
Maximum glazing height	1198
Overall height of the aluminium profile with seal	213
Maximum distance between two fixings (pre-drilled)	370
Maximum length of the aluminium profile	5000
Minimum clearance between two glazings	4
Maximum clearance between two glaz	50

